

SECTION 4:

RECOMMENDATIONS

The Central Arroyo Master Plan Advisory Committee developed the following Master Plan recommendations. The recommendations are illustrated in Exhibit 4-1, The Central Arroyo Master Plan.

4.1 BROOKSIDE PARK

Unreserved Picnic Area

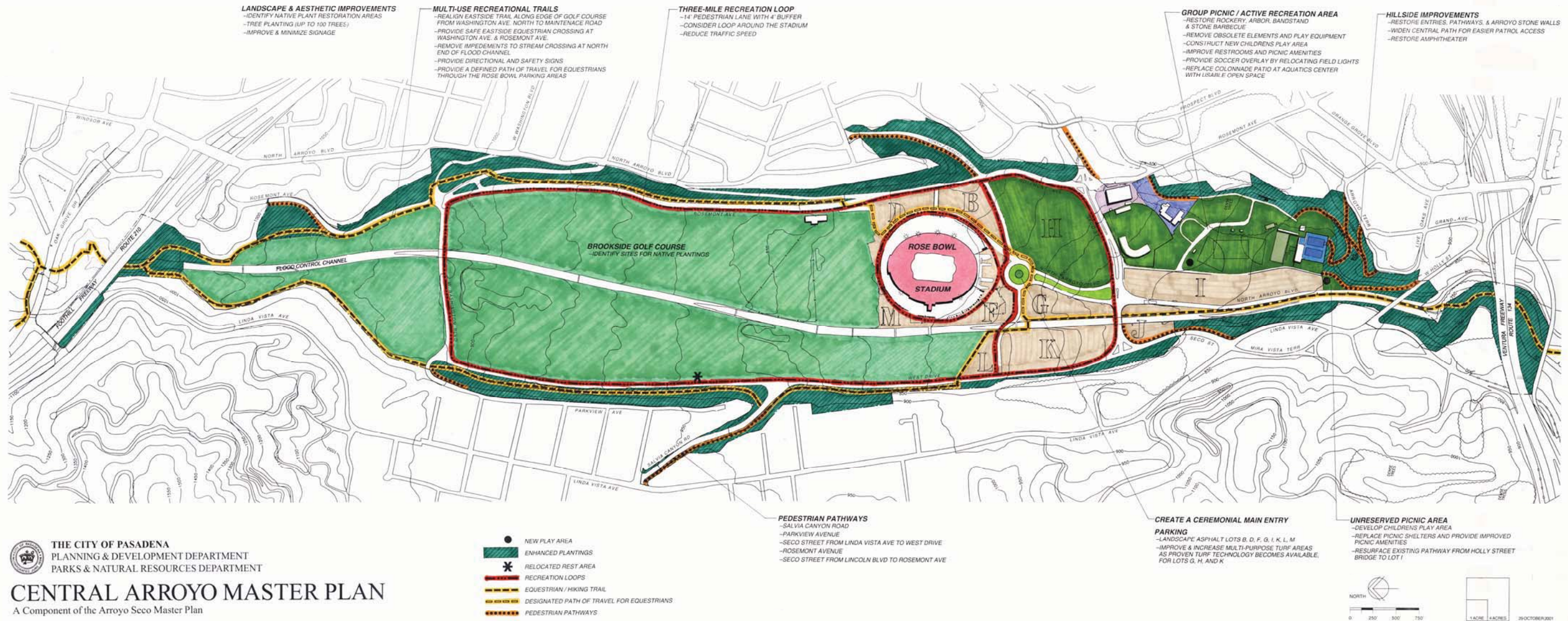
Because the Central Arroyo is the major public open space of the City, a portion of the park should be available to anyone on an unreserved basis. The group picnic areas in Brookside Park are often reserved during the weekend, limiting access to the park.

Recommendations

- Convert the existing reserved picnic area at the southern end of Parking Lot I to an unreserved picnic area.
- Replace the existing picnic shelters with four to five new ones that serve smaller family gatherings rather than large groups without increasing park capacity.
- Amenities will include barbecues and picnic tables. All amenities will be accessible to the disabled, including such items as longer picnic tables with concrete pads for ADA accessibility, barbecues with ample concrete pads, and public telephones.
- Develop a small children's play area that is inviting, visible, and accessible in this area, which is known as Section G. Disabled access and disabled children's play equipment will be included. Consider a joint City/community-based process for design and construction of the play area.
- Improve pedestrian access from the south by resurfacing the existing pathway from the Holly Street Bridge.
- Parking for the proposed unreserved picnic area on the southern edge of Lot I should be available on a continuous basis except during Rose Bowl displacement events.

Hillside Improvements

Many of the historic features on the slopes of Brookside Park that give the Central Arroyo its distinct character have fallen into disrepair. This unique wooded environment offers a cool retreat from the summer sun and the recreational activities on the turf areas.



Recommendations

- Restore the entries, pathways and arroyo stone walls connecting Arroyo Terrace to the Central Arroyo according to the Arroyo Seco Design Guidelines. This work will improve pedestrian access from the southeast by reopening the closed entries and restoring the historic pathways leading from Arroyo Terrace.
- Restore amphitheater area according to the Arroyo Seco Design Guidelines.

Group Picnic Area and Active Recreation Area

The group picnic areas and the band shell behind the Aquatic Center and the Brookside Sports Fields, available on a reservation basis, are popular amenities of the park and bring in much needed revenues. Maintenance has been an ongoing issue.

Recommendations

- Restore the Arbor, the Stone Barbecue Area, and the Rockery. Provide ramps and/or handrails to the first level of the Rockery.
- Restore the bandstand and seating. Provide ramps and/or handrails to the bandshell stage.
- Develop a new large children's play area east of the Rose Bowl Aquatics Center in the location of the abandoned play area. Remove obsolete play equipment and remove large mounds. Install medium-sized play area at the entrance to the park. Disabled access and disabled children's play equipment should be included. Consider a joint City/community-based process for design and construction of the play area.
- Reorient the existing Sports Fields to better accommodate a soccer overlay on the ball fields by relocating sports lights towards the west and moving the baseball diamonds towards each end of the soccer field.
- Maximize open space areas by relocating or removing items such as the circular hardscape feature near the front of the park, swings, and other obsolete elements, while maintaining overall park amenities and providing access for the disabled. All amenities will be accessible to the disabled, including such items as longer picnic tables with concrete pads, barbecues with ample concrete pads, and public telephones.
- Replace the colonnade area between the tennis courts and the Aquatic Center with turf to provide better access and usable open space.
- Restore Brookside maintenance office and yard.
- Maintain existing restrooms according to applicable standards, including providing ADA accessible facilities.
- Improve security lighting within Brookside Park and the hillside.

4.2 ROSEMONT PAVILION

The Rosemont Pavilion is currently used by the PTRA operation for only six months of the year. The PTRA activities are recognized as a positive influence for the City of Pasadena

and its activities should be encouraged. Issues regarding the pavilion structure include aesthetic appearance and the limited activities programmed for the rest of the year.

This site represents a major opportunity to realize two acres of recreation open space if the Rosemont Pavilion operations are relocated to another appropriate site.

Recommendations

- Maximize indoor recreation facilities and programs in the Rosemont Pavilion from February to July.
- Restore the building's appearance and surrounding landscaping.
- Support and assist the PTRAs to relocate their operations prior to 2017 to an alternative site outside of the Arroyo Seco that is acceptable to the PTRAs.
- In the event of PTRAs operations relocate, develop active recreation space on the Rosemont Pavilion site.
- Continue to provide space and venues for Fan Fest and other PTRAs events.

4.3 RECREATION LOOP

From early morning to evening, the four streets that bound the Brookside Golf Course and the Rose Bowl operate as a three-mile recreation loop for bicyclists, strollers, walkers, joggers, and roller bladers as well as a main vehicular circulation pattern around the Central Arroyo. Conflicts arise between the recreational users and traffic, and between walkers, roller-bladers, and bicyclists traveling at different speeds. Local traffic passes through the park as a short cut and speeding concerns have been expressed. Entrances and circulation through the Stadium parking areas are confusing and poorly marked.

Recommendations

Enhance the Recreation Loop by providing a safe, separate dedicated pedestrian lane. The typical 54-foot street right-of-way is recommended to have a 14-foot pedestrian lane, a 4-foot wide pavement buffer, and 36-foot two-way shared bicycle/vehicular travel lanes. The shared bicycle/vehicular travel lanes will range from 14 feet to 22 feet in width. The improvements are described as follows:

- Widen the dedicated pedestrian lane to 14 feet. The added width will provide ample distances for walkers, runners, roller bladers, strollers, and children on bikes.
- Separate the pedestrian lane from vehicular traffic with a 4-foot wide pavement buffer, e.g., arroyo stone, textured concrete, or pavers. The buffer will act as a warning strip for bicycles and automobiles.
- Maintain the two-way vehicular traffic on Seco, West, Washington, and Rosemont.
- Continue to provide the necessary lanes for vehicular traffic during major events.
- Provide additional rest areas along the Recreation Loop, which may include drinking fountains and restrooms accessible to the disabled. Consider an outside patio at the Brookside Club House that is accessible to recreation users.

- Consider the following traffic calming methods to enhance the park atmosphere of the Central Arroyo:
 - (1) Provide stop sign at Salvia Canyon Road.
 - (2) Take steps necessary to reduce the speed limit within the Central Arroyo to a level appropriate for parkland (i.e., 25 miles per hour).
 - (3) Incorporate sidewalks at the intersection of Rosemont Avenue/Seco Street.

Consider creating a stadium loop—a pedestrian pathway—around the Rose Bowl stadium for visitors and tourists to view the facility, and for daily park users to use as an alternative shorter exercise loop. This pathway would need to meet the safety and operational concerns of the Rose Bowl and golf course.

Create a ceremonial entry and front plaza that reflects the prestige of the Rose Bowl and provides a pleasurable and informative experience for visitors and tourists. This entry will extend from the existing main entry to Seco Street. The design should integrate the operational needs of buses, vehicles, and spectators.

4.4 RECREATION TRAILS

Recommendations – Regional Hiking and Equestrian Trails

- Restore the Rim Trail north of Washington Avenue on the slope above Rosemont Avenue.
- Provide a safe eastside equestrian crossing on Rosemont Avenue.
- Remove impediments to equestrians in the existing all-weather crossing at the northern end of the flood control channel. This includes restoration at the northern portion of the softbottom streamcourse located south of Devil’s Gate dam.
- Provide directional/safety signs, including new safety lights and activators.
- Provide a defined path of travel and appropriate signage for equestrians across the Rose Bowl parking lots from the main entry of the Rose Bowl stadium to the staging area near the Brookside Clubhouse.

Recommendations – Local Pedestrian Pathways

- Improve pedestrian access to the Central Arroyo by providing pathways surfaced in an appropriate all-weather material. Pedestrian pathways are recommended to be located along the following roads and other areas where possible:
 - Salvia Canyon Road between Linda Vista Avenue and West Drive.
 - Rosemont Avenue (western edge) to the eastside hiking and equestrian trail.
 - Seco Street from Linda Vista Avenue to West Drive.
 - Parkview Avenue to Washington Boulevard.
 - Seco Street from Lincoln Boulevard to Rosemont Avenue.

4.5 LANDSCAPE AND AESTHETIC IMPROVEMENTS

The Central Arroyo has traditionally been the premier regional recreation area for the City of Pasadena attracting visitors from all over the Los Angeles basin and tourists from around the world. At the same time, the Central Arroyo functions as a neighborhood park with homes lining the edge.

Recommendations

- Enhance the slopes and park areas with a designated plant palette, and consider the issues of fire, erosion, and maintenance.
- Identify areas for native plant restoration including the Brookside Golf Course.
- Develop a tree-planting program. Plant up to 100 trees native to the Arroyo Seco in the Central Arroyo area including streamcourse restoration areas.
- Improve and minimize the signage in the Central Arroyo as outlined in the Arroyo Seco Design Guidelines.
- Preserve the northern and southern view corridors.

4.6 PARKING

Recommendations

- Improve existing landscaping in asphalt parking areas to provide shade and aesthetic relief. Re-stripe Parking Lot I with a color-coded system to provide marked spaces that delineate the spaces assigned to Kidspace, the RBAC, and the general park.
- Improve and increase the Multi-Purpose Turf Areas in Lots H, G, and K as proven turf technology and resources become available.
- Consistent with the marketing needs of the Rose Bowl stadium, continue to minimize on-site event parking by encouraging use of designated off-site parking with a viable, efficient shuttle system.

4.7 FLOOD PROTECTION

The Devil's Gate Dam controls drainage from the Arroyo Seco watershed and Hahamongna Watershed Park. The County flood control channel bisects the Central Arroyo and hampers the functional access throughout the park. The present configuration with its chain-link fencing is unaesthetic as well as being under capacity.

Interest in restoring the natural Arroyo Seco stream has been expressed by the community and by numerous organizations. A feasibility study to identify opportunities for stream restoration in the Arroyo Seco has been completed by the Arroyo Seco Foundation and Northeast Trees. Their study, along with the recommendations in Pasadena's Arroyo Seco Master Plans and input from other agencies interested in the Arroyo Seco will be used by the

County to direct the Army Corps of Engineers in the preparation of a Watershed Management Plan for the Arroyo Seco.

Recommendations

Work with the County to complete a plan that will:

- Protect the health and safety of the residents of Pasadena.
- Protect the CAMP infrastructure, including the Rose Bowl, Club House, Fanny Morrison Center, Golf Course, Aquatic Center, and Brookside Park.
- Address the issues of functional use of the park and the aesthetics of the landscape.
- Based on the known options outlined above, the preference is for
 - A covered channel with a low flow stream through the Golf Course
 - A covered channel through the parking lots
 - Naturalized stream courses where feasible

4.8 PERMITTING PROCESS

The permitting process for facilities in the Central Arroyo is currently managed by three separate City offices: the Events Manager at the RBOC, the Office of Filming & Special Events in the Planning and Development Department, and the Parks Permit Office in the Human Services and Recreation Department.

Recommendations

- Coordinate scheduling of all events and activities in the Central Arroyo.
- Support scheduling with appropriate software with master scheduling capabilities.
- Provide enforcement of permit conditions and park rules.

4.9 MANAGEMENT AND MAINTENANCE

The facilities in the Central Arroyo are maintained by four separate entities: Parks and Natural Resources Division, Rose Bowl Operating Company, Rose Bowl Aquatic Center and the County. Maintenance in the Central Arroyo needs to be improved. Park facilities and turf areas have been damaged due to overuse. Some facilities are in disrepair and in need of restoration and modernization.

Recommendation

- Coordinate activities and intensity of activities to insure the facilities are not damaged by overuse.

4.10 LAND AND CONSERVATION ACQUISITION

Recommendations

- Acquire appropriate land for addition to the Central Arroyo.

4.11 ACCESSIBILITY AND SECURITY

Recommendations

Require all new facilities to meet ADA standards and review existing Central Arroyo facilities for compliance with ADA standards. Take corrective action, including the following:

- Upgrade drinking fountains in the Central Arroyo for accessibility.
- Provide disabled access and wheelchair spectator area at Jackie Robinson Baseball Stadium and at softball diamonds #2 and #3.
- Renovate walkways and surfaces for better accessibility.
- Provide accessible parking spaces, including van-accessible spaces.
- Provide signage for access to facilities as per the Arroyo Seco Design Guidelines.
- Consider a tactile map of key areas in the Central Arroyo.
- Upgrade existing security lighting in the Central Arroyo.
- Provide security lighting for activity areas to maintain a safe environment. Protect adjacent neighborhoods from lights and glare.

4.12 IMPLEMENTATION

Recommendations

- Prepare an annual implementation work plan through the Capital Improvement Program for approval by the City Council with advisory review by the Recreation and Parks Commission.
- Identify and develop sources of public, private, and grant funding for implementation.
- Implement the annual work plan and provide an annual report in each year to the City Council together with an annual work plan.
- The Director of Public Works will be responsible for the implementation of the Central Arroyo Master Plan.