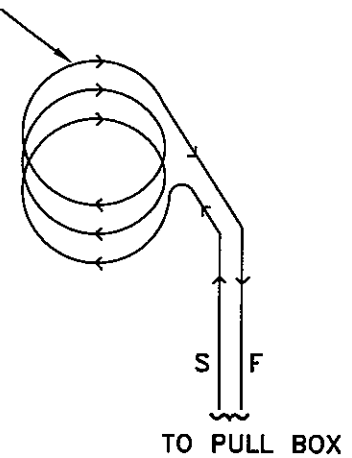
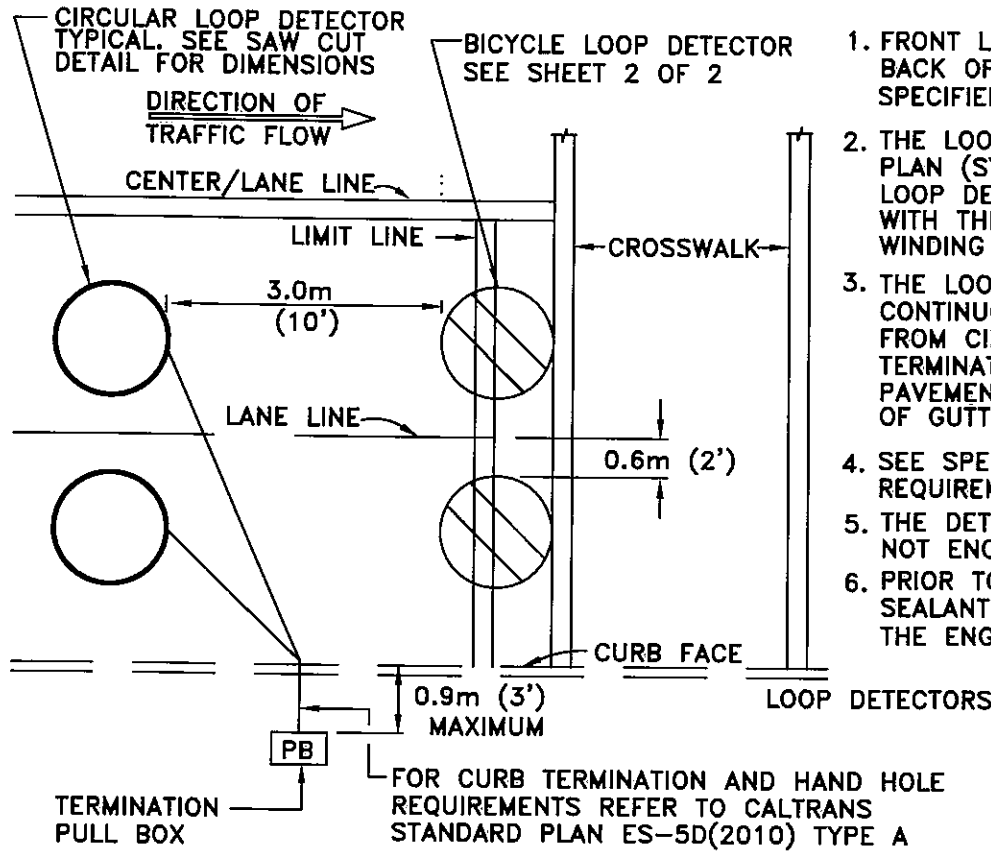


NOTES:

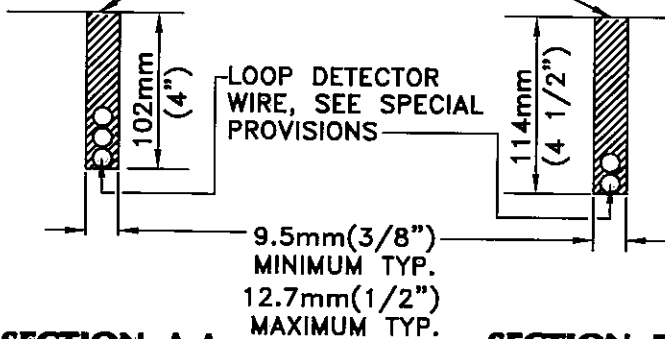
1. FRONT LOOP TO BE TANGENT WITH THE BACK OF CROSSWALK, UNLESS OTHERWISE SPECIFIED.
2. THE LOOP DETECTOR SHOWN ON THE PLAN (SYSTEM DETECTORS AND ADVANCE LOOP DETECTORS) SHALL BE INSTALLED WITH THREE (3) WINDS OF CABLE. SEE WINDING DETAIL, THIS SHEET.
3. THE LOOP DETECTOR CABLE SHALL BE A CONTINUOUS UNSPLICED CONDUCTOR, FROM CIRCULAR LOOP TO THE TERMINATION PULL BOX. SAW CUT SLOT IN PAVEMENT FROM CIRCULAR LOOP OF EDGE OF GUTTER, NEAR TERMINATION PULL BOX.
4. SEE SPECIAL PROVISIONS FOR ADDITIONAL REQUIREMENTS.
5. THE DETECTOR LOOP PULL BOX SHALL NOT ENCR OACH INTO CROSSWALK AREA.
6. PRIOR TO APPLICATION OF HOT MELT SEALANT, LOOPS MUST BE APPROVED BY THE ENGINEER OR CITY INSPECTOR.



WINDING DETAILS

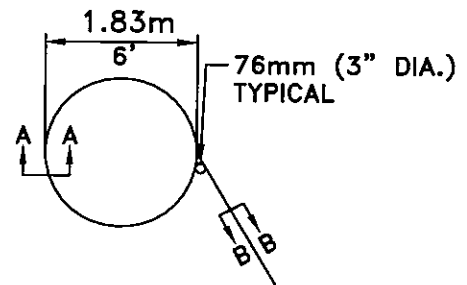
* HOT MELT SEALANT SHALL CONFORM TO CALTRANS SPECIFICATIONS 8040-41A-15 UNLESS OTHERWISE AUTHORIZED BY THE ENGINEER.

INJECT SLOT WITH HOT MELT SEALANT * LEVEL TO SURFACE TOP. DO NOT OVERFILL. SEE SPECIAL PROVISIONS



SECTION: A-A

SECTION: B-B



SAWCUT DETAIL

CITY OF PASADENA - DEPARTMENT OF PUBLIC WORKS

DRAWN BY:
CHOI CHAN

CHECKED BY:
ARNOLD DICHOSA

SUBMITTED BY:
CHRIS HERNANDEZ

**VEHICLE AND BICYCLE LOOP
DETECTOR INSTALLATION**

APPROVED BY:
Steve D. Wright
CITY ENGINEER

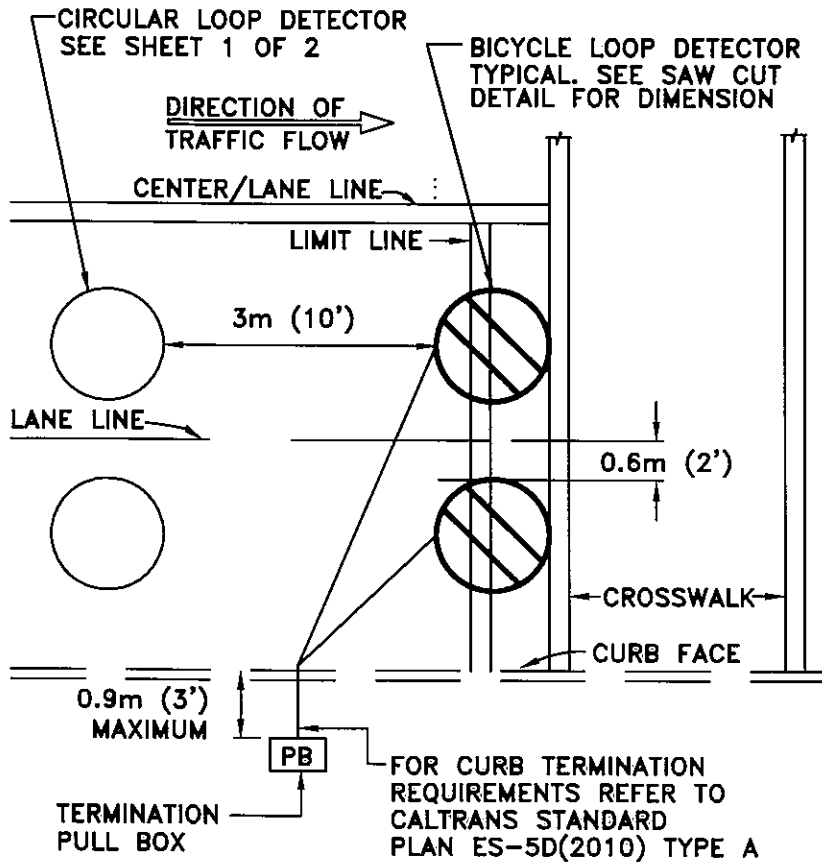
7/10/14
DATE

REVISION: 4
UNITS: DUAL

STANDARD PLAN:
S-976

SHEET 1 OF 2
5376-1-REV4 July 2, 2014

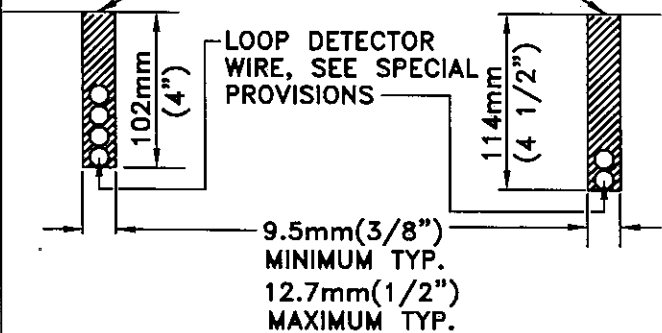
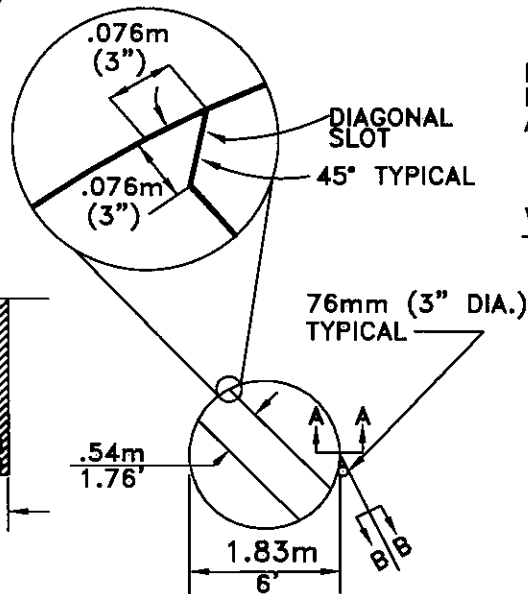
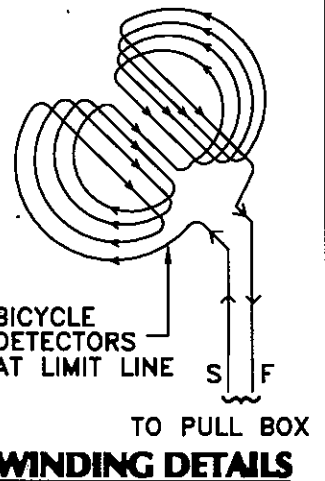
NOTES:



1. FRONT LOOP TO BE TANGENT WITH THE BACK OF CROSSWALK, UNLESS OTHERWISE SPECIFIED.
2. THE BICYCLE LOOP DETECTOR SHOWN ON THE PLAN SHALL BE INSTALLED WITH FOUR (4) WINDS OF CABLE. SEE WINDING DETAIL, THIS SHEET.
3. THE LOOP DETECTOR CABLE SHALL BE A CONTINUOUS UNSPLICED CONDUCTOR, FROM CIRCULAR LOOP TO THE TERMINATION PULL BOX. SAWCUT SLOT IN PAVEMENT FROM CIRCULAR LOOP OF EDGE OF GUTTER, NEAR TERMINATION PULL BOX.
4. SEE SPECIAL PROVISIONS FOR ADDITIONAL REQUIREMENTS.
5. THE DETECTOR LOOP PULL BOX SHALL NOT ENCR OACH INTO CROSSWALK AREA.
6. PRIOR TO APPLICATION OF HOT MELT SEALANT, LOOPS MUST BE APPROVED BY THE ENGINEER OR CITY INSPECTOR.

* HOT MELT SEALANT SHALL CONFORM TO CALTRANS SPECIFICATIONS 8040-41A-15 UNLESS OTHERWISE AUTHORIZED BY THE ENGINEER.

INJECT SLOT WITH HOT MELT SEALANT* LEVEL TO SURFACE TOP. DO NOT OVERFILL. SEE SPECIAL PROVISIONS



SECTION: A-A

SECTION: B-B

SAWCUT DETAIL

CITY OF PASADENA - DEPARTMENT OF PUBLIC WORKS

DRAWN BY:
CHOI CHAN

CHECKED BY:
ARNOLD DICHOSA

SUBMITTED BY:
CHRIS HERNANDEZ

**VEHICLE AND BICYCLE LOOP
DETECTOR INSTALLATION**

APPROVED BY:
Stu D. Wright
CITY ENGINEER

RCE NO. C46600 EXP. JUN 30, 2016

7/10/14
DATE

REVISION: 4 UNITS: DUAL

STANDARD PLAN:
S-976

SHEET 2 OF 2
S976-1-REV4 July 2, 2014